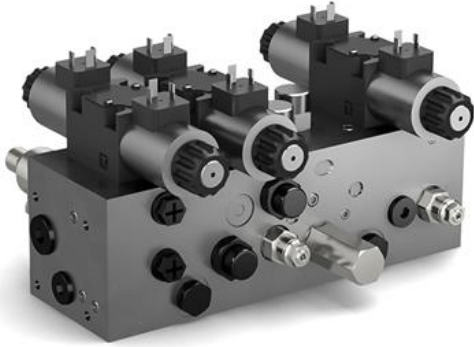


## Weber Hydraulik

Garanti: 12 ay  
Bu rne ait Trkiye ii kapı teslim fiyat ve teslim sresi ieren teklifimizi almak iin [info@yursat.com.tr](mailto:info@yursat.com.tr) e-posta adresine baŐvuru yapabilir ya da ayrıntılı bilgi iin +90 224 240 03 04 numaralı telefonumuzdan bizlere ulaŐabilirsiniz.  
**Weber Hydraulik** Markası, tedarik sresi iin ltfen bizimle iletiŐime geiniz.

*Firmamız Weber Hydraulik Trkiye Distribtr veya temsilcisi deĐildir. Firmamız sipariŐ durumunda, belirtilen rnlerde sadece Orjinal ve yeni rn teklifi sunmaktadır. Bu sitede gsterilen zel marka adları ve ticari markalar ilgili sahiplerinin mlkiyetindedir, talep durumunda kaldırılmaktadır.*



rn	Aıklama
<a href="#">EPDBDR-05-115-1-24V</a>	
<a href="#">012.0035</a>	Prop. Pressure relief valve in steel Pipeline G1 / 4 EPDBDR 05-115-1-24V
<a href="#">LO 05157/3</a>	
<a href="#">Art. No: 1115500/1</a>	LOH 95048/1
<a href="#">SMSV6-3/2-1-24V</a>	061.0003 3/2-way pilot seat valve cartridge
<a href="#">G25A21 92 70</a>	142.0002 control magnet 24V, without nickel, NH with PIN
<a href="#">0005538305</a>	
<a href="#">VB-3A (102.0001)</a>	
<a href="#">EEPDRDS3-05-115-5-24V</a>	3-way prop. pressure control valve, T-11A, Max. flow 12 l/min Pressure range ... 115 bar
<a href="#">022.0012</a>	EEPDRDS3-05-250-5-24V 3-Way Prop. Pressure Control Valve Cartridge, T-11A Max. flow 12 l/min Pressure range ... 250 bar
<a href="#">1090912</a>	Check valve M14x1.5 Short pin, O-rings 9x1 + 11x1 to KK-M14x1.5
<a href="#">1090906</a>	
<a href="#">040110_PVDE_2-11_e</a>	

<a href="#">657433</a>	Bit PH2 7,5 54(40) M6 61HRC poliirt
<a href="#">104782</a>	0-Ring 26x1,5 NBR75 #9-261
<a href="#">10001936</a>	MFS 168 11 5/240 6A
<a href="#">100055</a>	Kugel 3 1S03290-1 RB-3/G20
<a href="#">100057</a>	Kugel 4 1S03290-1 RB-4/G20
<a href="#">101023</a>	0,8x5,8x28,3 R1,309 180°
<a href="#">101133</a>	0-Ring 14x1,5 NBR75 I6-143
<a href="#">122074</a>	Oscillating magnet ...VA 230V 1.5m-3pol
<a href="#">135068</a>	Position sensor 64 inductive 0.3m M8GS-4pol Stat. Goods No.: 85365019 Country of origin: Hungary Please note that this is the replacement for WN 129307. The analog measurement value settings in the control system must be adjusted here
<a href="#">129402</a>	Light button 30-150 rotl. . HGA M8GS-3poI
<a href="#">129552</a>	Light scanner 18-120 Laser-KT2 U HGA M8GS
<a href="#">131936</a>	Cable M8WB-M12GS 4poI IOm ... sheathed. UL
<a href="#">133529</a>	ini Zy. mag. DC 5 PNP 0,6m M8GS-3poI LED
<a href="#">138500</a>	Tension spring 0.38x2.17x50.8 R0.257 252° KSR
<a href="#">138501</a>	Tension spring 0.47x2.6x60.2 R0.372 252° KSR
<a href="#">140676</a>	Ini 8x8 md. DC 5 PNP 4 vorn 0,6m M8GS-3
<a href="#">143100</a>	Ringini 15 md. DC 5 PNP M12GS-4poI
<a href="#">143101</a>	Ringini 20 md. DC S PNP M12GS-4poI
<a href="#">40012111X</a>	C30535-V3 .2-230-PN
<a href="#">40012617X</a>	C30S 1 S-V3. 2-230-PN
<a href="#">456135</a>	Drive set 1500 3Nm U AECO3 230V
<a href="#">456626</a>	Drive kit 600 30Nm U AEC30 230V
<a href="#">455118</a>	Encoderkabel C30S Abg. vo. 4poI IOm
<a href="#">455130</a>	Motor cable 030S output. hi. 3poI+PE 1Dm
<a href="#">456725</a>	Encoderkabel C30S Abg. hi. 4poI IOm
<a href="#">50005287</a>	Support rod 11 '5x1 52 M81/SW8A-6kt SA30
<a href="#">519062</a>	Segmentkli. S6 29 31,5 KSR
<a href="#">574485</a>	Guide bushing 11.5 ZK30 Ampco
<a href="#">585968</a>	Guide bushing 7.7 ZKO3 Ampco
<a href="#">586670</a>	Support rod 7.7x103 M61/SW5A-6kt SA03
<a href="#">598600</a>	Segmentkli. K 8,5 S 4,1/23,5 24,5 SL
<a href="#">666307</a>	Bit T30 10x40(25) M8A 61HRC
<a href="#">20289900032 PW 42 AGS</a>	
<a href="#">PW 42 AGS</a>	

<a href="#">NH00KTFM 160A</a>	
<a href="#">Mb 0005534001</a>	
<a href="#">10036316</a>	
<a href="#">Akkupac * E-Force</a>	
<a href="#">S 200- 49</a>	
<a href="#">Mb 0025 535705/002 09.01 019715.7</a>	
<a href="#">Pumpelement 9 * Mpe- 9 (8114897) Gew/Stk 0,084 Kg</a>	
<a href="#">Mb 0025 535905/004 04.03 019610/0</a>	
<a href="#">Jcb 478/42400</a>	
<a href="#">2163718</a>	
<a href="#">Lhx 650-415</a>	
<a href="#">Jcb 478/42300</a>	
<a href="#">141.0163</a>	Prop. Magnet 24V incl. Adapterfl. and screw PR60F00-24V Weight: 1.86 kg
<a href="#">Repair Kit For Cd70/35-320-Fwf11-S</a>	
<a href="#">A 50-250</a>	
<a href="#">Atpx 12-200</a>	
<a href="#">Gerã196;Tehalter. 2- F. Schere U.Spreizer</a>	
<a href="#">Cd120/70-320-Fwf11-S</a>	
<a href="#">S-270-71</a>	
<a href="#">Din 14800-H1 * 2 Kasten</a>	
<a href="#">Repair Kit For Cd120/70-320-Fwf11-S</a>	
<a href="#">Cd70/35-320-Fwf11-S</a>	
<a href="#">Repair Kit For Ldh35-50/36-135ff</a>	
<a href="#">E 50-T+sah 20 Mit 1500 U/Min. 69,000</a>	
<a href="#">Dph 4018-Sa</a>	
<a href="#">Mb 001 553 33 05</a>	
<a href="#">478/42300</a>	
<a href="#">Piston For Cd70/35-320-Fw11-S</a>	
<a href="#">102.0007 Mepr-2000-I</a>	
<a href="#">Sp-49</a>	
<a href="#">S 180-A</a>	
<a href="#">478/42400</a>	
<a href="#">Ldh35-50/36-135ff</a>	
<a href="#">Repair Kit For Ldh35-100/70-165ff</a>	
<a href="#">Ldh35-100/70-165ff</a>	

[Mepr-2000-Ei By 102.0007 Mepr-2000-I](#)

[385.078.1](#)

[Cover Gasket For Hydraulic Cylinder, Ref Dz 57  
22 216](#)

[Energiepac 12 Vdc/22ah](#)