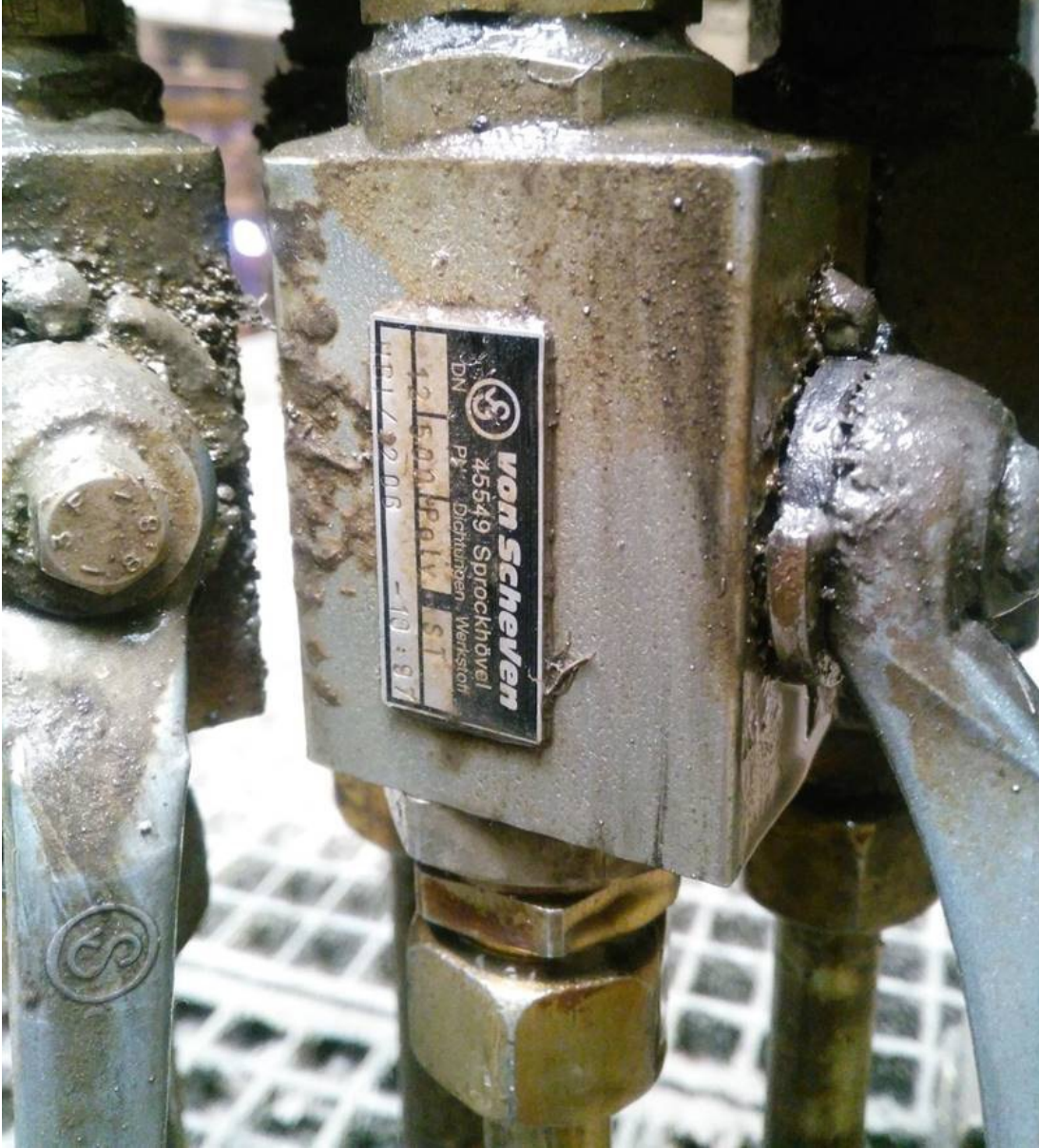


Von Scheven

Garanti: 12 ay
Bu rne ait Trkiye ii kapı teslim fiyat ve teslim sresi ieren teklifimizi almak iin **info@yursat.com.tr** e-posta adresine baŐvuru yapabilir ya da ayrıntılı bilgi iin +90 224 240 03 04 numaralı telefonumuzdan bizlere ulaŐabilirsiniz.
Von Scheven Markası, tedarik sresi iin ltfen bizimle iletiŐime geiniz.

Firmamız Von Scheven Trkiye Distribtr veya temsilcisi deĐildir. Firmamız sipariŐ durumunda, belirtilen rnlerde sadece Orjinal ve yeni rn teklifi sunmaktadır. Bu sitede gsterilen zel marka adları ve ticari markalar ilgili sahiplerinin mlkiyetindedir, talep durumunda kaldırılmaktadır.





¼r¼n	Açıklama
Type: HKS-C 4015	K323215024 Description: vS-HD ball valve; Type: HKS-C 4015; DN 32; PN 420; AS type: plug nipple according to DIN 20043; AS size: DN 38; AS_Druckst: Super Steck-O; AS type: socket according to DIN 20043; AS size: DN 38; AS-Druckst: Super Steck-O; Length standard: overall length according to data sheet; Operation: with hand lever; Interface: drive retrofitting possible (additional attachments required); Housing: forged steel 1.0460 galvanized; Ball: steel hard chrome plated; Spindle: steel hard chrome plated; Ball seal: POM; Spindle seal: NBR; Housing seal: NBR; Non-ferrous metal free;
HBSK-C 3215	K052515020 - Description: VS-HD compact ball valve; Type: HBSK-C 3215; DN 25; PN 300; AS type: plug nipple according to DIN 20043; AS size: DN 31; AS type: socket according to DIN 20043; AS size: DN 31; Length standard: overall length according to data sheet; Operation: with

	hand lever; Housing: steel 1.0715 galvanized; Ball: steel hard chrome plated; Spindle: steel hard chrome plated; Ball seal: POM; Spindle seal: NBR; Housing seal: NBR;
K381610002	Description: vS-LP ball valve; Type: MKA-C 1610; DN 16; PN 100; AS type: external thread according to DIN ISO 228/1; AS size: G 3/4"; AS type: external round thread; AS size: Rd 32 x 1/8 - cone 1:3; Operation: with hand lever; Housing: Steel 1.0715 galvanized; Ball: hard chrome-plated steel; Spindle: hard chrome-plated steel; Ball seal: NBR; Spindle seal: NBR; Housing seal: NBR;
K052015121	Description: vS-HD compact ball valve; Type: HBSK-C 2515; DN 20; PN400; AS-Art: Plug nipple according to DIN 20043; AS size: DN 25; AS-Art: Plug-in socket according to DIN 20043; AS size: DN 25; Operation: with double handle; Housing: Steel 1.0715 galvanized; Ball: hard chrome-plated steel; Spindle: hard chrome-plated steel; Ball seal: POM; Spindle seal: NBR; Housing seal: NBR;
05.2515020	
K321458101	
32.1258100	
K323.1.0715.Pn32.Dn32	
K051506000 Type Hbi-C 1506 Dn 15 Pn 500	
K052015121	
32.2515100	
32.1458100	
K320858100	
024010011	
K321258100	
K45802607h29432	
H1002.1.0507.Dn50.Pn150	
Hbi / 2206 - 10 : 97 / Dn12 Pn500 Polv St Ubl /206 -10:97 / Ventil = Dn 12 - Pn 500 - Dichtungen : Poly - Werkstoff : St	
D	
K052515020	
K45862600h29432	
Hbpd-C 20	
Ts3148-20	
K321258120	
Ubl / 206-10/97 Obsolete, Replaced By K051506000	