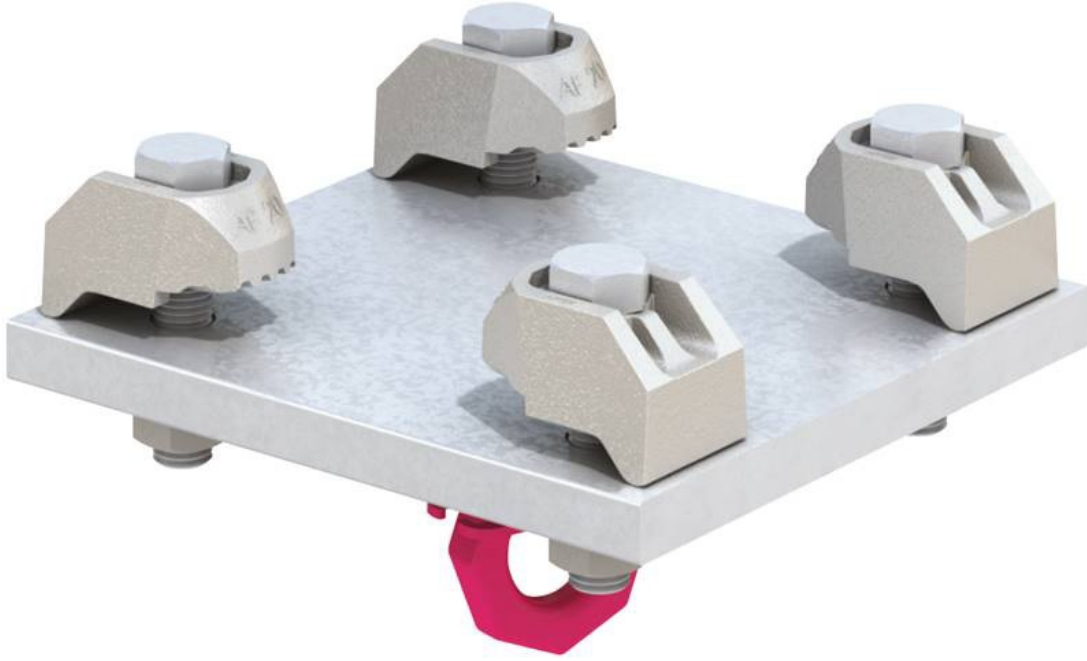


Lindapter

Garanti: 12 ay
Bu ¼r¼ne ait T¼rkiye i¼i kapı teslim fiyat ve teslim s¼resi i¼eren teklifimizi almak i¼in info@yursat.com.tr e-posta adresine baŐvuru yapabilir ya da ayrıntılı bilgi i¼in +90 224 240 03 04 numaralı telefonumuzdan bizlere ulaŐabilirsiniz. **Lindapter** Markası, tedarik s¼resi i¼in l¼tfen bizimle iletiŐime ge¼iniz.

Firmamız Lindapter T¼rkiye Distrib¼t¼r¼ veya temsilcisi deĐildir. Firmamız sipariŐ durumunda, belirtilen ¼r¼nlerde sadece Orjinal ve yeni ¼r¼n teklifi sunmaktadır. Bu sitede g¼sterilen Özel marka adları ve ticari markalar ilgili sahiplerinin m¼lkiyetindedir, talep durumunda kaldırılmaktadır.



¼r¼n	A¼ıklama
Lindapter clamps - type A	TPG - TZN
Lindapter clamps - type B	TPG - TZN (see attached data sheet)
(Screw) M20 x 90 - ISO 4017	
(Nut) M20 - ISO 4032	
(washer) A21 - ISO 7089	
D2 M16 6.5...20mm	
High friction clamp (AF12M)	
Washer for high friction clamp (AF12P1)	
Packing piece (AF12CW)	

High friction clamp (AF12S)	
Packing piece (AF12P2)	
FF10 LINDAPTER	
FERRULE FF10	
FERRULE FF12	
N0295 TEG FZN CF M16	188732 Girder clamp type CF ductile iron, hot-dip galvanized for M16 screws clamping ranges 8-16mm
Lindapter Tragerklemme Typ AF	
N0295 TEG FZN AF MM12	152787 Girder clamp type AF ductile iron, hot-dip galvanized for M12 screws average cam height = 12.5mm
N0295 TEG ZN B MM20	15575 Girder clamp type B malleable iron, galvanized for screws M20 average cam height = 10.0mm
N0295 TEG ZN FF M8	15583 Floorfast - eccentrically stepped clamp malleable cast iron, galvanized for M8 for carrier flange thickness 3-15mm
FF-M8*50	
FF-M8*60	
N0295 TEG FZN CF M16	188732 Support clamp type CF Nodular cast iron, hot-dip galvanized for screws M16 clamping ranges 8-16mm
N0295 TEG FZN LR M12	122502 Flexible two-part support clamp type LR malleable cast iron, hot-dip galvanized flexible clamping range 3- 12mm Flange inclination up to 15° possible
N0295 TEG FZN P1 LM12	122501 Compensating washer type P1 long M12 malleable cast iron, hot-dip galvanized for screws M12 disc thickness 6.0mm
N0295 TEG ZN LR M12	15590 Flexible two-part carrier clamp type LR malleable cast iron, galvanized flexible clamping range 3- 12mm Flange inclination up to 15° possible
N0295 TEG ZN P1 LM12	15597 Compensating washer type P1 long M12 malleable cast iron, galvanized for screws M12 washer thickness 6.0mm
N0295 ST FZN AFCW M12	119629 Compensating washer type AFCW M12, flat steel, hot-dip galvanized for screw M12 disc thickness 2.0mm
N0295 TEG FZN AF KM12	119630 Support clamp type AF Nodular cast iron, hot-dip galvanized for screws M12 short cam height = 5mm
N0295 TEG FZN AFW M12	150038 Insert part type AFW for carrier clamp type AF Nodular cast iron, flat steel, hot-dip galvanized for M12 disc thickness 5mm as a support for the nut or screw head when determining the screw length
N0295 TEG ZN FLS M8	158020 Beam clamp with joint type FLS high-alloy steel, galvanized connecting thread M8 adjusting screw M10 clamping range 3-17mm
N0295 TEG ZN FLS M10	147318 Beam clamp with joint type FLS high-alloy steel, galvanized connecting thread M10 adjusting screw M10 clamping range 3-17mm
N0295 TEG ZN FL1 9	234934 Beam clamp type FL malleable cast iron, galvanized with hole 9mm for clamping range 3-17mm with adjusting screw M8
N0295 TEG ZN FL2 11	186296 Beam clamp type FL malleable cast iron, galvanized with hole 11mm for clamping range 3-19mm with adjusting screw M10
N0295 TEG ZN FL3 13	102108 Beam clamp type FL malleable cast iron, galvanized with hole

N0295 TEG FZN LR M20	13mm for clamping range 3-23mm with adjusting screw M10 273329 Flexible two-part beam clamp type LR Malleable cast iron, hot-dip galvanized Flexible clamping range 3- 20mm Flange inclination up to 15° possible Also suitable for long holes Assembly instructions under the following
N0295 TEG TZN P1 LM20	329111 Compensating washer type P1 long M20 malleable cast iron, hot-dip galvanized for screws M20 washer thickness 10.0mm Assembly instructions under the following link: https://www.lindapter.com/de/montageanleitung Minimum quantity: 100 pieces, as packing unit: 50 pieces Quantity differs from the original desired quantity of 70 pieces
clamps - type A A12 M12	
clamps - type A A16 M16	
TYPE CW 12 M12	
HB10-1 HDG	