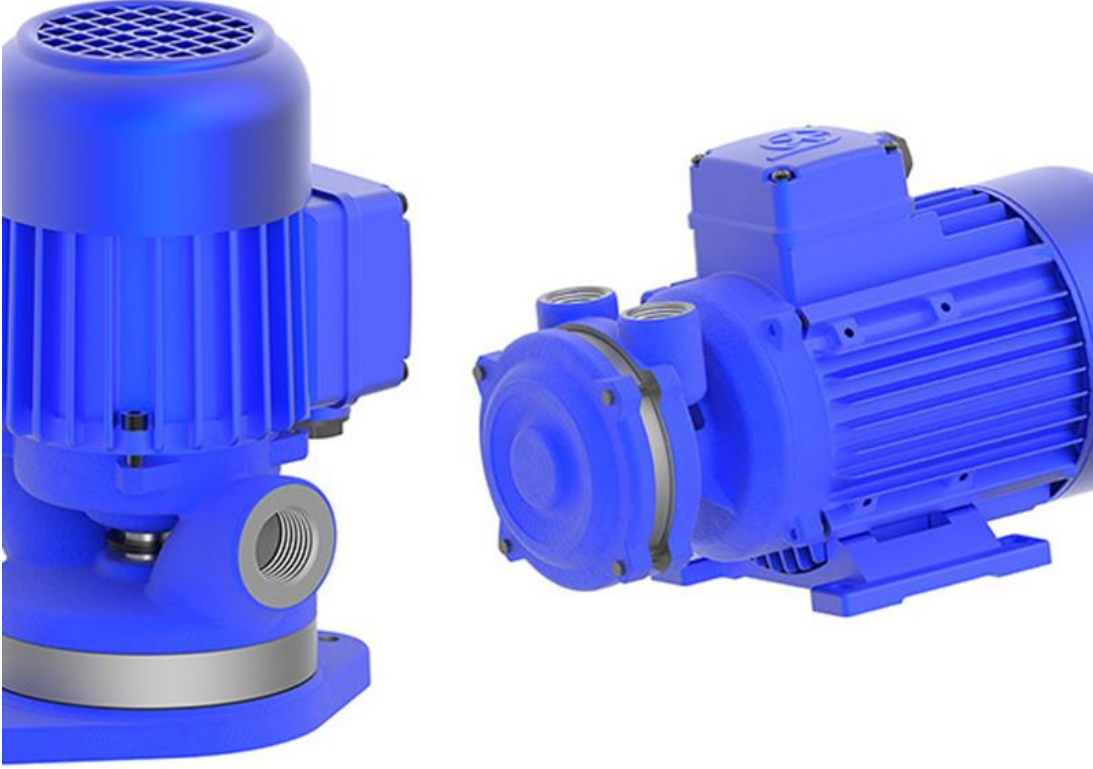


Laipple Keb / Brinkmann

Garanti: 12 ay
Bu rne ait Trkiye ii kapı teslim fiyat ve teslim sresi ieren teklifimizi almak iin info@yursat.com.tr e-posta adresine baŐvuru yapabilir ya da ayrıntılı bilgi iin +90 224 240 03 04 numaralı telefonumuzdan bizlere ulaŐabilirsiniz. **Laipple Keb / Brinkmann** Markası, tedarik sresi iin ltfen bizimle iletiŐime geiniz.

Firmamız Laipple Keb / Brinkmann Trkiye Distribtr veya temsilcisi deĐildir. Firmamız sipariŐ durumunda, belirtilen rnlerde sadece Orjinal ve yeni rn teklifi sunmaktadır. Bu sitede gsterilen zel marka adları ve ticari markalar ilgili sahiplerinin mlkiyetindedir, talep durumunda kaldırılmaktadır.



rn	Aıklama
00.90.045-5101	
00.S4.319-0005	
0000000-0999	
02.38.11N	
0208530-6230	
023800N-2051	
04.38.11N	
05.F5.B3A-690A	
06.02.110-24V	
06.06.440-4001	
0702320-4002	
07F5B3A-0A0A	

09B6A3A-9900
10.06.640-4000
10.06.640-4001
10.10.620-4000/24 VDC
113811H-4009
12F5CBB-350A
13F5C1D-390A
14F5C1D-380A
2017/113745
2017/116569
63L/4A-BR-SO
63L/4-TB
71L/2-SO (M71b2)
80S/4-BR-TB-ST10
80S/4-BR-TB-ST10 (MA80a4)
ATL25-RH2-C105-63L/4A-BR-TB
B14
CLA25-RN2-C400-TS-FC3-A2
D3.SM.000-3400
F22D DM71G4 B02 WE
F43AG DM90SB4 P1
FXA63-7,77/1-63L/4A-TB-ST0
FXA63-7,77/1-63L/4A-TB-ST05
HA042-60/1-DP71B2/4-BR-ST10
HA042-60/1-IEC71
HA042-60/1-IEC71, B14
L108080090028004
L109091390034007
L110045740019009
L116030880065002
L117014900001010
L117021180090003
M63b6
M71A6
MA63b4
MA80/12-TB-BR-FL-ST10 *

MADP100a2/8
MADP71B2/4-BR-ST10
NMS30
NMS30HU-10/1-56L/4-TB
NMS30HU-15/1-IEC63
NMS30HU-40/1-56L/4
NMS30HU-80/1-IEC50/56
nms40hu
NMS40HU-10/1-71L/4-ST05
NMS40HU-10/1-IEC63-SO
NMS40HU-15/1-63L/6
NMS40HU-30/1-63L/4
NMS40HU-30/1-IEC63
NMS40HU-40/1-63L/4-TB
NMS40HU-60/1-63L/4-TB
NMS50HU-10/1-IEC80
NMS50HU-15/1-IEC80
NMS50HU-7,5/1-80L/2A-IE3
NMS50HU-7,5/1-IEC80
NMS63HU-20/1-IEC90
NMS63HU-40/1-IEC80, B14
NMS63HU-7,5
NMS63HU-7,5/1-IEC80, B14
NMS90HU-30/1-SO
Typ 100L/4-BR-TB
Typ 63L/4A-TB-ST05 (M63c4)
Typ NMS40HU-10/1-63L/4A-TB-ST05
Typ NMS63HU-20/1-IEC80, B14
Typ NMS63HU-40/1-IEC80, B14
Ha042-60/1-Db71b3/4br-St10
Nms30hu Motor
Typ 04.38.11n
- Getriebemotor
03.38.11n
Typ 03.38.11n

G22a Dm90b4 Ts
Nms40 Getriebemotor Nms40 Laipple Keb I=30/1 N2=47 Kw=0,18
Madp71b2/4 Elektromotor
Nms 63 I=7.5 1340 U/Min 0.55 Kw
- Getriebemotor Mit Flanschen
A042-60/1-Iec71, B14
Ma80a4 Elektromotor
Nms40hu/So Motor Getriebe
D3.Sm.000-3400 Motor8,4 Nm, 3000 1/Min
Ma80a4
M56b4 Motor
G22a DI 71g.4
Nms63hu
04.38.00n-1051 105v Dc P=30w
Nms40/S0 Gearmotor N2=140.I=10/1, Kw=0.25
Nms40hu Gearboxunigear Schneckengetriebetyp Nms40hu-10/1-Iec71, B14i= 10
Nms40hu-10/1-63l/4a-Tb-St05
100l/4a-Br-Tb
Nms40hu-10/1-Iec63, B14
63l/4a-Tb-St05
Nms63hu Gearbox
00.S4.319-0005 Kabel Servol = 5 M
Nms63hu-7,5/1-80s/4-Br-So-Tb-St10 (Ma80a4)
06.02.110-24v Combinorm-Btyp 06.02.110-24v (14.115.06.1.3)anker Lochkreis 46 Mm
??042 ?3 Gearbox
L116125880015023 Getriebemotor Mit Flansch
Nms40/S0 Getriebemotor N2=140,I=10/1, Kw=0,25
Nms50
Ha042-60/1-Madp71b2/4-Br-St10
90l/2-Ie2-So (M90l2)
Nms40/S0 Gear Box
Nms40hu-40/1-63l/4-St05
Madp100a2/8 Getriebemotor (Gesammelt)
Nms30 Abtriebsflansch

06.06.440-4001 Kupplungs-Brems-Kombination
F. Zg12 Dm80
80s/6-Tb (M80a6)
Nms40hu-10/1-Iec63-So Schneckengetriebetyp Nms40hu-10/1-Iec63-Soi= 10
Kom2000/23602 Type Nms40 Getriebe
05.38.11n
Nms40hu-10/1-63l/4a-Tb-St05 (M63c4)
Nms50 Schneckengetriebe
Nms63hu-7 Unigear Schneckengetriebe5/1- Iec80, B14i= 7,5ersatzgetriebe Zu Kom. Nr. 2018/120669
Getriebemotor Nms 40/50 I10 1340 U/Min 0.25 Kw
Nms40hu-80/1-63l/6-So-St05
Nms75hu-10/1-90l/4-Tb-Fl-Ie3
Nms40/S0 Getriebe
2017/116569 Nms40hu/So
Nms50 Getriebe Kom. 2012/93238
Ha042
Nms63hu Gear Box
Nms63hu-7,5/1-80s/4-Br-So-Tb-St10