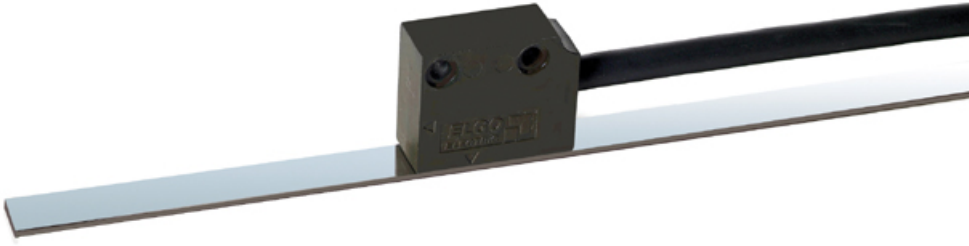


## Elgo

Garanti: 12 ay  
Bu ¼r¼ne ait T¼rkiye i¼i kapı teslim fiyat ve teslim s¼resi i¼eren teklifimizi almak i¼in **info@yursat.com.tr** e-posta adresine baŐvuru yapabilir ya da ayrıntılı bilgi i¼in +90 224 240 03 04 numaralı telefonumuzdan bizlere ulaŐabilirsiniz.  
**Elgo** Markası, tedarik s¼resi i¼in l¼tfen bizimle iletiŐime ge¼iniz.

*Firmamız Elgo T¼rkiye Distrib¼t¼r¼ veya temsilcisi deĐildir. Firmamız sipariŐ durumunda, belirtilen ¼r¼nlerde sadece Orjinal ve yeni ¼r¼n teklifi sunmaktadır. Bu sitede g¼sterilen ¼zel marka adları ve ticari markalar ilgili sahiplerinin m¼lkiyetindedir, talep durumunda kaldırılmaktadır.*



¼r¼n	A¼ıklama
<a href="#">Emix2-000-04.0-2-00</a>	733290035 Magnetic length measuring system
<a href="#">Mb20 20 10 1 R</a>	Magnetband for EMIX
<a href="#">P8822-007-024-00-R</a>	Zweiachsige Positionsregelung 24VDC
<a href="#">P9511-000-024-0</a>	Axis compact control without program memory with relay outputs 000 = standard version 024 = supply24VDC 0 = signal input A / B24V
<a href="#">15-42-1000</a>	Rotary pulse encoder 1000 = 1000 pulses / revolution Supply: 10-30 VDC Outputs: A, B HTL with the cable gland Weight: 1.0 kg Customs tariff number: 9031499000 Country of manufacture: CZ
<a href="#">P9511-000-024-0</a>	1-axis compact control without program memory with relay outputs 000 = standard version 024 = supply24VDC 0 = signal input A / B24V
<a href="#">EMIX2-000-04.0-2-00</a>	Magnetic length measuring system Sensor and evaluation electronics in the sensor housing 000 = standard version 04.0 = cable length 4.0m 2 = resolution 0.01mm 00 = supply / level 10-30VDC / 10-30VHTL
<a href="#">MB20-20-10-1-R</a>	Magnetic tape for EMIX

<a href="#">IZ15 Mode/l sensor Ms250</a>	
<a href="#">LMIX2-032-02.0-1-01</a>	Magnetic length measuring system 032 = special version (with 2k encapsulation, protective diode, shield is not on the housing, PWM error output) 02.0 = cable length 8.0 m 1 = resolution 0.1 mm 01 = supply / level 10-30 VDC / 5V TTL RS422
<a href="#">LIMAX2-00-030-62N5-SSG0-D9M1</a>	Absolute length measurement system forLiftengs 00=Standardversion 030=cable length 3.0 m 62N5=resolution 62.5 µm SSG0 = SSI - interface ( 25 - Bit Graycode ) D9M1 = 9 - pole . D - SUB - Stecker / Rifle
<a href="#">AB20-80-10-1-R-D-15-BK80</a>	LIMAXMagnetband(NULLinside)
<a href="#">LIMAX2MWSET</a>	Mounting bracket for LIMAX2
<a href="#">555100040</a>	Montageset LIMAXRMS
<a href="#">IZ16E SENSOR</a>	
<a href="#">MB20-50-10-1R 636 MM</a>	
<a href="#">MB20-25-10-1R 636 MM</a>	
<a href="#">2000306N5SSG0GD9M1 / HW:02.1/SW:3.5</a>	
<a href="#">0030050-4SSI-UGXV IP55</a>	HW :003/SW :2.4
<a href="#">Floor Magnetic Reader plastic</a>	
<a href="#">MA06LS</a>	
<a href="#">FMAX-00-005-0010-SSB0-U</a>	Guided sensor head for Guide railFSMAB 00=default version 005=cable length 0.5m 0010=resolution0.01mm SSG0=SSI interface U=unguided version
<a href="#">FSMAB-000-0500</a>	guide rail incl. Magnetic tape for FMAX series (max. measuring length 650mm) 000=default version 0500=total length 500mm (total length=measuring length+150mm)
<a href="#">P8721</a>	
<a href="#">IZ16E-043-1-0.30-0</a>	761161046 Incr. position display With external sensor, battery operated 7-digit LCD display, digit height 14mm 043=for FOW/FLW 1=integrated battery compartment (1xC) with cover 0.30=cable length 0.3m 0=fixed cable outlet
<a href="#">MB20-25-10-1-R</a>	Magnetband for IZ16E
<a href="#">LMIX2-000-10.0-1-01</a>	Magnetisches Lngenmesssystem Sensor und Auswerteelektronik im Sensorgehuse 000 = Standardversion 10.0 = Kabel lnge 10,0 m 1 = Auflsung 0,1 mm 01 = Versorgung / Pegel 10 - 30 VDC / 5V TTL
<a href="#">LMIX2-000-08.0-1-00</a>	Magnetic length measuring system Sensor and evaluation electronics in the sensor housing 000 = standard version 08.0 = cable length 8.0 m 1 = resolution 0.1 mm 00 = supply

	/ level 10-30VDC/10-30VHTL
<a href="#">EMIX2-000-0.50-2-01</a>	Magnetic limgmes system 000=Standard version 0.50=cable length 0.5 m 2= resolution 0 .0 1 mm 01=Perspilon/level 10-30 V DC / 5 V TTL
<a href="#">MB20-20-10-1-R</a>	Magnetband for EMIX
<a href="#">FMAX-00-005-0010-SSB0-U</a>	Guided Sensor for FSMAB 00 = Standard version 005 = Kabel length 0.5 m 0010 = resolution 0.01 mm SSB0 = SI - interface (25 Bit Binary Code) U=unded
<a href="#">FSMAB-000-0500</a>	GUIDE RAILS INCL. Sagnet- band for FMAX 0500 = length 500 mm Measurement length 350 mm TOTAL LENGTH = MEASUREMENT LENGTH + 150 mm
<a href="#">P9521</a>	
<a href="#">P8822</a>	13 cm x 13 cm with a depth of 8 cm
<a href="#">EMIX2-000-10.0-2-00</a>	EMIX2-000-10.0-2-00 Magnetic Linear Encoder Magnetic length measuring system Sensor and evaluation electronics in the sensor housing 000 = standard version 10 .0 = cable length 10.0 m 2 = resolution 0.01mm 00 = supply / level 10 - 30 VDC / 10 - 30 VHTL
<a href="#">MAN.DG244 EMAX-016-00.4-2-422-0-2</a>	
<a href="#">LIMAX2-09-040-0500-CO1TG</a>	
<a href="#">LIMAX3CP-00-050-1000-CO1TG-0 ID-X/125k/0/1.</a>	
<a href="#">732000110</a>	MS2060 - 08.0 Magnetsensor for Z60 - 014
<a href="#">P9521</a>	
<a href="#">HW 02.2/SW 3.5.1</a>	
<a href="#">Z50-054-024-0</a>	7 0 1 5 0 0 1 0 5 1-axis position display with 1.4 mm high 7-piece. LCD display incl. R S 2 3 2 - S c h n i t t s e l a t w i t h M i n i - U S B - CONNECTION 0 5 4 = Replacement for Z 5 4 0 2 4 = Supply 2 4 V DC 0 = S i g n a l i n g a n g A / B 2 4 V
<a href="#">20100831</a>	
<a href="#">SENSOR MAN.DG244 EMAX-016-00.4-2-422-0-</a>	
<a href="#">P8721-000-024-0- P</a>	
<a href="#">Az16e3013</a>	
<a href="#">E Mix3-000-01.0-2-11</a>	
<a href="#">Model Lmix2 Code 039.01.01.01</a>	
<a href="#">Z16-042-001-1.0</a>	
<a href="#">Emix2-000-01.5-2-11</a>	

<a href="#">Z-20e</a>
<a href="#">5-37-0050-02,0</a>
<a href="#">See The Attached Files</a>
<a href="#">Azs-000-1-03.0-1</a>
<a href="#">Z89-000-024-4</a>
<a href="#">P9521-005-024-0 -</a>
<a href="#">99521-000-024-V</a>
<a href="#">Lmix2-032-02.0-1-00</a>
<a href="#">56.500.024</a>
<a href="#">799999999, Emax0015001042009k6</a>
<a href="#">Mix2-039-03 0-10j</a>
<a href="#">799999999, EmaI0015001042009k6</a>
<a href="#">15 - 32 - 0250 - 20.0-S</a>
<a href="#">Z60-000-024-111</a>
<a href="#">Emix2-000-02.0-2-00 (73329006)</a>
<a href="#">Mix1-000-01.0-1-11</a>
<a href="#">Spare Parts Plexiglass For Fluorescent Lamps Owf-2x36-003</a>
<a href="#">711p88001 P8822-000-230-00-R-En</a>
<a href="#">L M I X 3 - 0 0 5 - 0 . 3 0 - 1 - 0 0</a>
<a href="#">733290011</a>
<a href="#">71p/110v Ac - P8511-000-115-0-R-En (711p8504)</a>
<a href="#">Kt-E-B-0124 00</a>
<a href="#">701166005</a>
<a href="#">701hw0001 Hd 15 - 000 - 001</a>
<a href="#">Z16-000-001-0-5 New Iz16-000-1- 01, 0-0</a>
<a href="#">810508</a>
<a href="#">Gmix1a-000-01.5-1-00</a>
<a href="#">I Z 1 5 E - 0 3 1 - 3 - 0 0 , 5 - 0</a>
<a href="#">Gmix2-000-06.0 24vdc</a>

<a href="#">Mb 20.2 5</a>
<a href="#">54.500.024 Obsolete By Z50-054-024-0 (701500105)</a>
<a href="#">I Z 1 6 E - 0 0 0 - 1 - 0 2 , 0 - 0</a>
<a href="#">P8511-000-115-0-R-En (711p8504)</a>
<a href="#">733210007, Mix3-000-0000-1-00</a>
<a href="#">Lmix1 - 010 - 10.0-1 -11</a>
<a href="#">5-0090-000200</a>
<a href="#">56.500.024sn173 Ng20 729395- 19.12.2002 Sv018 V1-0.</a>
<a href="#">Ms20.25</a>
<a href="#">Mix3-000-3-00</a>
<a href="#">Z59 X0x</a>
<a href="#">Z16-032-001-N - , No</a>
<a href="#">Emix23-000-30.0-0001-01-L</a>
<a href="#">Z15</a>
<a href="#">P9521-002-024-02</a>
<a href="#">Emax00015010a2038k 4 0 - - - - - A - - - -</a>
<a href="#">7310031002</a>
<a href="#">Counter 220 Vac</a>
<a href="#">71.P.Sn002</a>
<a href="#">Model: Z-16</a>
<a href="#">85 P Sp370</a>
<a href="#">P/N: 733240040 Type: Emix3-000-05.0- 2-11</a>
<a href="#">Lmix 22-000-03.0-0100-00</a>
<a href="#">Z89-000-024-00x</a>
<a href="#">15-32-0250-03.0</a>
<a href="#">65699967</a>
<a href="#">733280145 Lmix2-000-08.0-1-11</a>
<a href="#">Mix3-000-0000-5-11</a>

<a href="#">P 2288</a>	
<a href="#">P 9 5 2 1 - 0 0 0 - 0 2 4 - 0</a>	
<a href="#">733280145 , Type Lmix 2 000 08 0111</a>	
<a href="#">Mb20-20-10-1-R (73100015)</a>	
<a href="#">Iz15e-001-4-01,0-0</a>	
<a href="#">004 0194 124</a>	
<a href="#">Z16-028-001-0,6-E Art.Nr.:701160030 :</a> <a href="#">By: Iz16e-000-1-00,6-0-Cap</a>	
<a href="#">86910902/S</a>	
<a href="#">7621 0101</a>	
<a href="#">7 0 1 5 8 6 0 0 2</a>	
<a href="#">70064660980</a>	
<a href="#">Elgo P8822</a>	(DC Supply-P8822-013-024-00-R-EN-80074590560)
<a href="#">2688</a>	
<a href="#">Lmix2-000-008.0-1-00</a>	
<a href="#">810514</a>	
<a href="#">P8822 24 Dc</a>	
<a href="#">Az17e-600-3-Xx.X-1</a>	
<a href="#">Z 5 8 - 6 0 0 - 0 2 4 - 1</a>	
<a href="#">Lmix3-000-08.0-1-00-V</a>	
<a href="#">Emix2-000-10.0-2-11 0987586</a>	
<a href="#">Z60-000-024-111</a>	3-axis position indicator Digit height 7mm 0 0 0 = S t a n d a r d v e r s i o n 0 2 4 = 2 4 V DC supply 1 1 1 = S i g n a l i n g a n g A / B / Z P e r s p i l i o n t / level 1 0 - 3 0 V DC / 1 0 - 3 0 V H T L ATTENTION: C o n n o c t i o n o f a x e 3 o n l y v i a D - S U B - P e c k e r ! Replacement for Z89-000-024-000
<a href="#">P8511-003-024-0-R</a>	
<a href="#">P/N: P9511-000-230-M</a>	
<a href="#">Lmix2 P/N: Tp93 ? 6716 ? 671607125 ?</a> <a href="#">C</a>	
<a href="#">Cpu 235</a>	
<a href="#">M S 2 0 6 0 - 0 2 . 0</a>	
<a href="#">Iz16e-000-1-00,6-0-Cap</a>	

<a href="#">Iz16e -000 -1-00,2-0 701166004</a>	
<a href="#">Mb 20.50</a>	
<a href="#">Please See The Attached Pictures..</a>	
<a href="#">Emax-029-01.5-7-A22-2</a>	
<a href="#">Mb20. 20</a>	
<a href="#">733280145</a>	
<a href="#">7999999999</a>	
<a href="#">P 9 5 2 1 - 0 0 0 - 0 2 4 - 0 ( 7 1 1 9 5 2 0 0 6 ) 1 - A C H S K O M P A K T S T E U E R U N G 0 0 0 = S T A N D A R D V E R S I O N 0 2 4 = V E R S O R G U N G 2 4 V D C 0 = S I G N A L E I N G A N G A / B 2 4 V</a>	
<a href="#">Iz16e-000-8-03.6-1-Ag-Cap</a>	
<a href="#">Type 15.62</a>	
<a href="#">P8721-000-115-0-En</a>	
<a href="#">Gmix1a-000-3.0</a>	
<a href="#">Ab20-40-10-1-R-11</a>	
<a href="#">733250022</a>	
<a href="#">Wdr Ds 01019217</a>	
<a href="#">Z50-54-024 - 0</a>	
<a href="#">7480</a>	
<a href="#">Lmix1</a>	
<a href="#">Lmix2 - 047 - 03.0 - 1 - 01</a>	Magnetic length measuring system Sensor and evaluation electronics in the sensor housing 047 = special version 03.0 = cable length 3.0m 1 = resolution 0.1 mm 01 = supply / level 10-30VDC / 5V TTL
<a href="#">Typ71</a>	
<a href="#">Z16-034-001-3.3-Ag , Iz16e-000-8-03.6-1-Ag-Cap</a>	
<a href="#">7 0 1 5 0 0 1 0 5</a>	
<a href="#">Elg02688</a>	
<a href="#">Type: 71.P , P8511-000-230-0-R-En</a>	
<a href="#">Type: 87p2</a>	
<a href="#">Emix2-000-10.0-2-11</a>	

<a href="#">Lmix1-000-01.0-1-11</a>	
<a href="#">Lmix2-000-08.0-1-11</a>	
<a href="#">Lmix M820-50-10-1-R</a>	
<a href="#">15-32-0250-02.0 715320052</a>	
<a href="#">15-62-0250-01.5</a>	
<a href="#">1024 P Encoder 24 V Dc</a>	
<a href="#">731031003, Mb Endkappe 20mm</a>	
<a href="#">Cable For 56.500.024.Sn173.Ng20</a>	
<a href="#">50.610.60.20 Iw 4 , By 705570013</a>	
<a href="#">Emax2-00-015-F10-420-19k2</a>	
<a href="#">Lmix2 -000-08.0-1-00 1983719</a>	
<a href="#">Mb Endkappe10 Mm / Set</a>	
<a href="#">Type 453</a>	
<a href="#">Ma06ls</a>	
<a href="#">Mb20-20-10-1- R</a>	
<a href="#">LIMAX2-00-030-62N5-SSG0-D9</a>	743002003 Absolute length measuring system for lift systems 00=standard version 030=cable length 3.0m 62N5=resolution 62.5µm SSG0=SSI interface (25-bit gray code) D9M1=9-pin D-SUB plug/socket
<a href="#">Plastic Lids For Tips,For Fluorescent Lamps Owf-2x36-003</a>	
<a href="#">A Z 1 6 E - 0 0 0 - 1 - X . X X - 1 (7 6 2 1 6 0 1 0 1)</a>	
<a href="#">Lmix2-047-03.0-1-01</a>	
<a href="#">Z 2 5 - 0 0 0 - 0 2 4 - 0</a>	
<a href="#">Z16-Sn000-001-0,2-0 , By Iz16e -000 - 1-00,2-0 701166004</a>	
<a href="#">Mix3-000-0000-2-11</a>	
<a href="#">99521-000-024-V (720303-17.12.2001 ? Sv001 V3-3)</a>	
<a href="#">Type: Z-59e</a>	
<a href="#">201-M-Pnp</a>	
<a href="#">P8511-000-230-0-R-En</a>	
<a href="#">701560001</a>	



<a href="#">733260022</a>
<a href="#">Ms16.</a>
<a href="#">P8822-000-024-00</a>
<a href="#">Lmix1-000-03.0-1-00 733250022</a>
<a href="#">731000274, Ab20-50-20-2-R-12</a>
<a href="#">705570013</a>
<a href="#">Emix2-000-02.0-2.00</a>
<a href="#">P 40</a>
<a href="#">Z89-000-024-99x</a>
<a href="#">A B 2 0 - 4 0 - 1 0 - 1 - R - 1 1 ( 7 3 1 0 0 0 0 7 4 )</a>
<a href="#">Mb 20-25-10-R For Z15</a>
<a href="#">Lmix2-000-0.50-1-00-D2</a>
<a href="#">I Z 1 6 E - 0 0 0 - 1 - 0 0 , 5 - 0</a>
<a href="#">M I X 1 - 0 0 9 - 0 3 . 0 - 1 - 0 1</a>
<a href="#">Z59 000</a>
<a href="#">Az16 (*)</a>
<a href="#">Kt-E-B-0194-00</a>
<a href="#">Iz16e-00-1 -00 , 5 - 0</a>
<a href="#">Mix 3 - 000 - 0000 - 2 - 00</a>
<a href="#">A Z 1 6 E - 0 0 0 - 1 - X . X X - 1 ( 2 G )</a>
<a href="#">731000110, Emab</a>
<a href="#">80-B2</a>
<a href="#">P8822 220 Ac</a>
<a href="#">Egc- M1- 1428315</a>