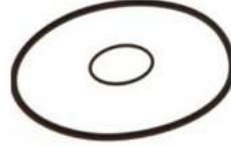
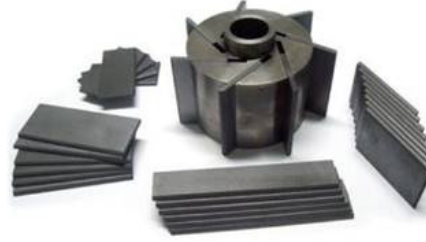


## Becker

Garanti: 12 ay  
Bu rne ait Trkiye ii kapı teslim fiyat ve teslim sresi ieren teklifimizi almak iin [info@yursat.com.tr](mailto:info@yursat.com.tr) e-posta adresine baŐvuru yapabilir ya da ayrıntılı bilgi iin +90 224 240 03 04 numaralı telefonumuzdan bizlere ulaŐabilirsiniz. **Becker** Markası, tedarik sresi iin ltfen bizimle iletiŐime geiniz.

*Firmamız Becker Trkiye Distribtr veya temsilcisi deĐildir. Firmamız sipariŐ durumunda, belirtilen rnlerde sadece Orjinal ve yeni rn teklifi sunmaktadır. Bu sitede gsterilen zel marka adları ve ticari markalar ilgili sahiplerinin mlkiyetindedir, talep durumunda kaldırılmaktadır.*



rn	Aıklama
<a href="#">SOLENOID VALVE \ 4/2 WAY \PART NO:9700131664</a>	
<a href="#">G024002</a>	Type: rotary valve, dry running VTLF2.250 / 0-79 Operating mode: vacuum pump Motor drive: three-phase asynchronous motor Rated power 50Hz: 5.5 kW Rated power 60Hz: 6.6 kW Mains voltage: 230 / 400V +/- 10% 50Hz IE3 265 / 460V +/- 10%, 60Hz IE3 Degree of protection (EN 60529): IP55 Temperature monitoring: thermal switch (TKO, bimetal) Motor approval: CE Accessories: relief valve check valve Suction side filter: integrated paper Suction side silencer: standard Suction side connection: G2 1/2 " Valve setting suction side: 200 mbar abs Limitation valve standard Pressure side silencer: standard Valve setting pressure side: +100 mbar Painting: RAL 9007 gray aluminum
<a href="#">00890116200</a>	
<a href="#">2824359</a>	
<a href="#">42689422300003RE</a>	
<a href="#">57360111500 OEM</a>	
<a href="#">57360411500 (OEM)</a>	
<a href="#">72750099689</a>	
<a href="#">72800399611</a>	
<a href="#">73600199613</a>	

<a href="#">74000209000</a>
<a href="#">90132500005</a>
<a href="#">90133000004/ WN124-034</a>
<a href="#">90134900007</a>
<a href="#">901373 01010</a>
<a href="#">901388 00005</a>
<a href="#">90220900000</a>
<a href="#">90952900000</a>
<a href="#">90955500000</a>
<a href="#">91101200000</a>
<a href="#">96000900001</a>
<a href="#">96541200000</a>
<a href="#">96541500000</a>
<a href="#">G000239</a>
<a href="#">G007623</a>
<a href="#">G007775</a>
<a href="#">G007865</a>
<a href="#">G008163</a>
<a href="#">G008220</a>
<a href="#">G008377</a>
<a href="#">G020827</a>
<a href="#">G023575</a>
<a href="#">G023591</a>
<a href="#">G024026</a>
<a href="#">G025574</a>
<a href="#">G026410</a>
<a href="#">KDT / KVT 2.100 / 3.100</a>
<a href="#">U 4.100 F/K 100/117 m3/h</a>
<a href="#">U 4.400 F/K G007650 400 M3/H 0,5 MBAR 11,0 KW 400/690 V ±10% 50/60 HZ</a>
<a href="#">U 4.400 SA/K G007693 400 M3/H 3,0 MBAR 11,0 KW 400/690 V ±10% 50/60 HZ</a>
<a href="#">U 4-100 SA/K</a>
<a href="#">U 5.100 (G021639)</a>
Operating principle: side channel blower SV300/2 Operating mode: pressure or vacuum pump Execution: two-stage Motor drive: three-phase motor asynchronous Rated power 50Hz: 3 kW Rated power 60Hz: 3.6 kW Mains voltage: 230/400V+/-10% 50Hz IE3 265/460V+/-10%, 60Hz IE3

<a href="#">G027141</a>	Degree of protection (EN 60529): IP55 Temperature monitoring: thermal switch (TKO, bimetal) Engine Approval: CE UR (UL) Accessories: foot Suction side silencer: integrated long Suction side connection: G2 1/2" Pressure side silencer: integrated long Pressure side connection: G2 1/2" Paintwork: RAL 9007 gray aluminum
<a href="#">G022813</a>	Operating principle: side channel blower SV400/2 Operating mode: pressure or vacuum pump Execution: two-stage Motor drive: three-phase motor asynchronous Rated power 50Hz: 4 kW Rated power 60Hz: 4.8 kW Mains voltage: 230/400V+/-10% 50Hz IE3 230/400V+/-10% 60Hz IE3 265/460V+/-10%, 60Hz IE3 Degree of protection (EN 60529): IP55 Temperature monitoring: thermal switch (TKO, bimetal) Engine Approval: CE CSA UR (UL) Accessories: foot Suction side silencer: integrated long Suction side connection: G3" Pressure side silencer: integrated long Pressure side connection: G3" Paintwork: RAL 9007 gray aluminum
<a href="#">9100006305</a>	
<a href="#">HAWE KR2-1</a>	NO:9100-0001-20
<a href="#">HAWE KS2-1</a>	9100-0048-20
<a href="#">HAWE FS2-1</a>	NO:BE 9100 0049 20
<a href="#">G051817</a>	Operating principle: rotary valve, oil-lubricated U5.71/0-00 Operating mode: vacuum pump Motor drive: three-phase motor asynchronous Rated power 50Hz: 1.5 kW Rated power 60Hz: 1.8 kW Mains voltage: 230/400V 60Hz 230/400V+/-10% 50Hz IE3 265/460V+/-10%, 60Hz IE3 Protection class (EN 60529): IP55 Temperature monitoring: thermal switch (TKO, bimetal) Motor approval: CE CSA UR (UL) Accessories: internal gas ballast Suction side filter: F35 (paper) Suction side connection: G1 1/4 " Pressure side connection: diverter cap Paint finish: RAL 9007 gray aluminum
<a href="#">G051816</a>	Operating principle: rotary valve, oil-lubricated U5.71/0-00 Operating mode: vacuum pump Motor drive: three-phase motor asynchronous Rated power 50Hz: 1.5 kW Rated power 60Hz: 1.8 kW Mains voltage: 230/400V 60Hz 230/400V+/-10% 50Hz IE3 265/460V+/-10%, 60Hz IE3 Protection class (EN 60529): IP55 Temperature monitoring: thermal switch (TKO, bimetal) Motor approval: CE CSA UR (UL) Accessories: internal gas ballast Suction side connection: G1 1/4 " Pressure side connection: diverter cap Paint finish: RAL 9007 gray aluminum
<a href="#">FILTER CARTRIDGE 90950700000</a>	90950700000
<a href="#">FILTER CARTRIDGE 90951400000</a>	
<a href="#">FILTER CARTRIDGE 84040107000</a>	
<a href="#">90133400004</a>	Carbon pusher set (4 pieces) WN124-031 KDT / KVT 2,140 - 3,140 / KL1,140
<a href="#">90136701005</a>	Carbon pusher set (5 pieces) WN124-196 TLF 250/360
<a href="#">Filter cartridge 90951200000</a>	
<a href="#">G007777</a>	Operating principle: rotary valve, dry running VT 4.25 Operating mode: vacuum pump Motor drive: three-phase motor asynchronous Rated power 50Hz: 0.75 kW Rated power 60Hz: 0.9 kW Mains voltage: 190-255/330-440V+/-10% 50Hz 190-290/330-500V+/-10% 60Hz Protection class (EN 60529): IP55 Temperature monitoring: thermal switch (TKO, bimetal) Motor approval: CE Accessories: relief valve Suction side connection: G3/4" Paint finish: RAL 9007 gray aluminum
<a href="#">90134900007</a>	Carbon pusher set (7 pieces) WN124-162 DT / VT 3.25 + DSK / T 4.25 + DSK/DT 4.25K
<a href="#">Item 72</a>	Air filter

<a href="#">RAG MINING:1074020</a>	120 KN \ 3M/S \ 900 MM \ RAKE&RELEASE VAN \ TRACK GAUGE
<a href="#">BE 9900 3000 05</a>	
<a href="#">50600026400</a>	COARSE SEPARATOR U4.190-0-160
<a href="#">90050700003</a>	SLIDE SET PLASTIC (3 pieces) WN150-058 U2.250 (replaces TN 90050700000)
<a href="#">G053231</a>	Operating principle: rotary valve, dry running VT4.25 Operating mode: vacuum pump Motor drive: three-phase motor asynchronous Rated power 50Hz: 0.75 kW Rated power 60Hz: 0.9 kW Mains voltage: 190-255/330-440V 50Hz 190-290/330-500V 60Hz Protection class (EN 60529): IP55 Temperature monitoring: thermal switch (TKO, bimetal) Motor approval: CE Accessories: relief valve Suction side filter: integrated paper Suction side connection: G3/4" Valve setting suction side: 150 mbar abs control valve Paint finish: RAL 9007 gray aluminum
<a href="#">08087661</a>	A5
<a href="#">G024013</a>	Operating principle: rotary valve, dry running VTLF2.250/0-79 Operating mode: vacuum pump Motor drive: three-phase motor asynchronous Rated power 50Hz: 5.5 kW Rated power 60Hz: 6.6 kW Mains voltage: 400V+/-10% 50Hz IE3 460V+/-10% 60Hz IE3 Protection class (EN 60529): IP55 Temperature monitoring: thermal switch (TKO, bimetal) Motor approval: CE Accessories: relief valve check valve Suction side filter: integrated paper Suction side silencer: standard Suction side connection: G2 1/2" Valve setting suction side: 200 mbar abs Limit valve standard Pressure side silencer: standard Valve setting pressure side: +100 mbar Paint finish: RAL 9007 gray aluminum
<a href="#">G016141</a>	Operating principle: rotary valve, dry running VX4.40 Operating mode: vacuum pump Motor drive: three-phase motor asynchronous Rated power 50Hz: 1.25 kW Rated power 60Hz: 1.5 kW Mains voltage: 190-255/330-440V 50Hz 190-290/330-500V 60Hz Protection class (EN 60529): IP54 Temperature monitoring: thermal switch (TKO, bimetal) Motor approval: CE Accessories: relief valve Suction side connection: G3/4" Valve setting suction side: 100 mbar abs control valve Paint finish: RAL 9018 papyrus white
<a href="#">G013533</a>	Operating principle: rotary vane, dry running VX4.16 Operating mode: vacuum pump Motor drive: three-phase asynchronous motor Rated power 50Hz: 0.55 kW Rated power 60Hz: 0.7 kW Mains voltage: 175-260/300-450V 50Hz 202-300/350-520V 60Hz Protection class (EN 60529): IP54 Temperature monitoring: none Motor approval: CE Accessories: blow-off valve Suction side filter: integrated paper Suction side connection: G1/2" Valve setting suction side: 100 mbar abs Control valve Paint finish: RAL 9007 gray aluminum
<a href="#">BEGEPG013533</a>	
<a href="#">G053214</a>	Operating principle: rotary vane, dry running VX4.40 Operating mode: vacuum pump Motor drive: three-phase asynchronous motor Rated power 50Hz: 1.25 kW Rated power 60Hz: 1.5 kW Mains voltage: 190-255/330-440V 50Hz 190-290/330-500V 60Hz Protection class (EN 60529): IP55 Temperature monitoring: thermal switch (TKO, bimetal) Motor approval: CE Accessories: blow-off valve Suction side filter: integrated paper Suction side connection: G3/4" Valve setting suction side: 100 mbar abs Control valve Paint finish: RAL 9007 gray aluminum
<a href="#">909507</a>	
<a href="#">90950500000 Filterpatrone</a>	
<a href="#">1000001133</a>	ATEX TERMINATION UNIT VTRX-100EUX
<a href="#">Tbn22</a>	
<a href="#">1000001087</a>	POWER INSULATOR VBDX-100EUX

<a href="#">00010027500</a>	
<a href="#">1000001106</a>	VHF TWO WAY AMPLIFIER ATEX VESX-300EUX
<a href="#">149128</a>	
<a href="#">90951000000</a>	
<a href="#">153702</a>	
<a href="#">G008188</a>	
<a href="#">Vp8 ,250</a>	
<a href="#">90222900000</a>	
<a href="#">9013520000</a>	
<a href="#">G024013</a>	
<a href="#">1000000714</a>	VHF LEAKY FEEDER CABLE, 350M REEL, ATEX
<a href="#">Mall8f215-4</a>	
<a href="#">158795</a>	
<a href="#">Schwimmer St559-0-1 Fhn86780099559</a>	
<a href="#">Sv7.330/1-01 Kw</a>	
<a href="#">54900012300</a>	
<a href="#">Vakuumpumpe U4.20 (G009865)</a>	
<a href="#">90951900000 Filter-Patrone 58 X 19 X 40</a>	
<a href="#">90952900000 Filterpatrone 90952900000</a>	
<a href="#">Typ D 80 By 4 P</a>	
<a href="#">071382</a>	
<a href="#">90950700000 Cartridge Filter Vakuumpumpe</a>	
<a href="#">U 4.400 Sa/K G007693 400 M3/H 3,0 Mbar 11,0 Kw 400/690 V Å177;10% 50/60 Hz</a>	
<a href="#">G013205</a>	
<a href="#">Sv7.330/2-01 // 2824359</a>	
<a href="#">C 75/2</a>	
<a href="#">U4.165 Sa/K</a>	
<a href="#">54900022200</a>	
<a href="#">Type: U 4-100 Sa/K By U 5.100 (G021639)</a>	
<a href="#">86780099559</a>	
<a href="#">6210t</a>	
<a href="#">02000026100</a>	
<a href="#">02000016400</a>	
<a href="#">72800199622</a>	
<a href="#">00890016500</a>	

<a href="#">Vp8_140</a>	
<a href="#">96000900000</a>	
<a href="#">50600026400</a>	CRUSHER U4.190-0-160
<a href="#">90657700000</a>	
<a href="#">U 4.100 F/K 100/117 M3/H By U 4.100 Sa/K</a> <a href="#">G017016</a>	
<a href="#">54900021100</a>	
<a href="#">00760071000</a>	
<a href="#">57360111500</a>	Cartridge set RV2.23-0-61
<a href="#">00890016500</a>	
<a href="#">Sv 300/1 F</a>	
<a href="#">Mf06la200-132f85001e Ip65 100 Hz 380-415 V</a> <a href="#">0</a>	
<a href="#">Vtlf 2.250/0-79</a>	
<a href="#">02000016400 Kolben T325-12</a>	
<a href="#">072940</a>	
<a href="#">008 901 16200</a>	
<a href="#">D 1884327</a>	
<a href="#">Vtlf250,250</a>	
<a href="#">158100</a>	
<a href="#">74136500000</a>	
<a href="#">U 4.70 F/K (G017021)</a>	
<a href="#">G022574</a>	
<a href="#">54900026100</a>	
<a href="#">909 555 00000 Filter Cartridge</a>	
<a href="#">00900016300</a>	
<a href="#">Sv 7.380/1-01</a>	
<a href="#">G007414</a>	
<a href="#">Sv7.330/2-01 // 2824359 , By Sv 300/1</a>	
<a href="#">90950500000</a>	
<a href="#">125547</a>	
<a href="#">90133300004</a>	
<a href="#">54900026400 Dichtungssatz U4.165/ 4.190/</a> <a href="#">4.250</a>	
<a href="#">901347</a>	
<a href="#">901388 00005 Schulterblatt Becker Dt\vt</a> <a href="#">4.6\4.8</a>	
<a href="#">U4.400 Sa/K</a>	

<a href="#">901334</a>	
<a href="#">42619498300</a>	
<a href="#">90220900000 Kupplungsscheibe Rotex 38</a>	
<a href="#">072940</a>	
<a href="#">071382</a>	
<a href="#">90133400004</a>	
<a href="#">01390019600</a>	
<a href="#">Lamellas For Becker Vt 4.40,Art. No. 90135200007</a>	
<a href="#">90133000004</a>	
<a href="#">Ventilator T4.40-13</a>	
<a href="#">Picchi02200</a>	
<a href="#">U 4.20 (G009866)</a>	
<a href="#">G007537</a>	
<a href="#">1000000751</a>	ATEX ADDITIONAL BOX VSDX-100EUX
<a href="#">G015660</a>	
<a href="#">G020827 Pump Becker U 4.250 Sa/K 5,4/7,55kw Vakuumpumpe U4.250 Sa/Knachfolgemodell Mit Ie 3 Motor</a>	
<a href="#">90139900007</a>	
<a href="#">68151090</a>	
<a href="#">56020027500</a>	
<a href="#">41814498276114</a>	
<a href="#">90050700003</a>	SLIDING PLASTIC PLASTIC (3 pieces) WN150-058 U2.250 (replaces TN 90050700000)
<a href="#">90951800000 Filterpatrone 90951800000</a>	
<a href="#">42679422300003re</a>	
<a href="#">153702</a>	
<a href="#">Wn124-120</a>	
<a href="#">G007089 Kvt 3.100</a>	
<a href="#">90661250000</a>	
<a href="#">39d1387-G14217596</a>	
<a href="#">906544</a>	
<a href="#">90135200000 Das Schulterblatt 95 X 43 X 4 Becker T3.40/T4.40</a>	
<a href="#">Sv 7.430/1-01</a>	
<a href="#">Sv 5.1050/1-01</a>	
<a href="#">G023226</a>	

<a href="#">3 Type Filter (Attached Foto)</a>
<a href="#">G025694</a>
<a href="#">90134700007 Schulterblatt 63 X 35,5 X 4 Dt/Vt4.16</a>
<a href="#">901373 01010 Rotor Vanes (Kit) (Satz 10 Stck) Wn 124-205</a>
<a href="#">G016329 / Sv 5.490/1</a>
<a href="#">00770016700</a>
<a href="#">90661720000</a>
<a href="#">3 Type Filter</a>
<a href="#">90136701005 Lamellen, Kohle-Schieber(5mm) Wn124-196</a>
<a href="#">00890016500 Dichtung T3.40-61890016500</a>
<a href="#">84040207000</a>
<a href="#">96541600000</a>
<a href="#">909510</a>
<a href="#">G000700</a>
<a href="#">90950700000 Filter</a>
<a href="#">90133000000</a>
<a href="#">90950500000 Filterpatrone 90950500000</a>
<a href="#">90135200007 Model No:Wn124-161</a>
<a href="#">Sv 7.330/1-01</a>
<a href="#">Vt4.40</a>
<a href="#">096210</a>
<a href="#">Kvx3.100</a>
<a href="#">U 4.400 F/K G007650 400 M3/H 0,5 Mbar 11,0 Kw 400/690 V 177;10% 50/60 Hz</a>
<a href="#">74000209000 Filter Housing Fk200</a>
<a href="#">G017450</a>
<a href="#">Satz Von Schiebern Wn150-058 250 G2 Art.-Nr. 90050700003</a>
<a href="#">1000001100</a> POWER BARRIER ATEX VCDX-100EUX
<a href="#">149128</a>
<a href="#">U4.70sa/K.</a>
<a href="#">G007775 Vakuumpumpe Vt4.25 50\60hz. 1420\1700\07 Min-09kw 25-30 M3\h 150\150 Mbar</a>
<a href="#">Dvt3140</a>
<a href="#">Brake Lining For:A150-S30</a>



<a href="#">G013221</a>
<a href="#">00010027500 Gehaeuse T425-1</a>
<a href="#">5ap132s-2 (7aa)</a>
<a href="#">034223</a>
<a href="#">Kt169001023</a>
<a href="#">G000238</a>
<a href="#">Vt 4.25 G007865</a>
<a href="#">51140010100</a>
<a href="#">90136701005</a>
<a href="#">129933</a>
<a href="#">90220900000 Kupplungsscheibe Kupplungsscheibe Rotex 38</a>
<a href="#">90134900007 Schiebersatz</a>
<a href="#">91715200000</a>
<a href="#">73600199613 Vakuumreguliertventil St 613-0-2( Ersetzt Nr. 73600204000 )</a>
<a href="#">39d1387-G38217597</a>
<a href="#">Dvt280</a>
<a href="#">84040105000 84149000</a>
<a href="#">96541300000</a>
<a href="#">50600026200</a>
<a href="#">U 4.100sa/K , By U 5.100</a>
<a href="#">G008220 Vakuum-Kompressor</a>
<a href="#">90133400007</a>
<a href="#">Sv 5.90/1-01</a>
<a href="#">90134700007</a>
<a href="#">129933</a>
<a href="#">U 5.100</a>
<a href="#">41814498276114</a>
<a href="#">90951800000</a>
<a href="#">G017169</a>
<a href="#">U 4.100 Sa/K (G017016)</a>
<a href="#">G018883 U4.40/09</a>
<a href="#">Sensor Temperatur Wn259.1-10 Art.-Nr. 94340270000</a>
<a href="#">U4.70sa/K</a>
<a href="#">90665700000</a>

<a href="#">Picch102200</a>	
<a href="#">90664900000</a>	
<a href="#">94961400000</a>	
<a href="#">50600026200</a>	
<a href="#">G014123 (Ex G003096-84141030)</a>	
<a href="#">90951900000</a>	
<a href="#">G023575 Blower Sv 130/1, 3 Phase, 0.75/0.9 Kw Built-In Filter</a>	
<a href="#">L80/11hk 3m 38u</a>	
<a href="#">02000026100</a>	
<a href="#">00900016300</a>	
<a href="#">Dx 4.25k/0-06</a>	
<a href="#">1000000768</a>	SAFETY POWER SUPPLY, 2X12V / 1,3A ATEX MPS_ia.2222
<a href="#">158100</a>	
<a href="#">39d16382-G12216973</a>	
<a href="#">90950700000</a>	
<a href="#">54900023900</a>	
<a href="#">G000974</a>	
<a href="#">G023392</a>	
<a href="#">U 5.100 (G021639)</a>	
<a href="#">G008024</a>	
<a href="#">84040207000 Filterpatrone</a>	
<a href="#">Model: U 4,400 Sa/K 2007 S/N: D 2210376</a>	
<a href="#">147168</a>	
<a href="#">54900026400</a>	GASKET SET U4.165 / 4.190 / 4.250
<a href="#">G008049</a>	
<a href="#">2786079 Vt.4.10 Vakuum-Kompressor</a>	
<a href="#">90950500000 Filterelement</a>	
<a href="#">90136701005 Set Kohle-Wendeschneidplatten (5 Stk.)wn124-196tlf 250 / 360</a>	
<a href="#">Sv 5.690/1-01</a>	
<a href="#">Type: U 4.250 F/K</a>	
<a href="#">Professional.6 Lmu</a>	
<a href="#">147168</a>	
<a href="#">G006331</a>	
<a href="#">U 5.100 (G021639) Vakuumpumpe U 5100</a>	

<a href="#">90135200007</a> <a href="#">Sv 300/1</a>
<a href="#">96540600000</a>
<a href="#">G007089</a>
<a href="#">Vtlf250,140</a>
<a href="#">Grafit-Platten</a>
<a href="#">096210</a>
<a href="#">125547</a>
<a href="#">90135200000</a>
<a href="#">Bmst18_13203j</a>
<a href="#">G006163</a>
<a href="#">G009865</a>
<a href="#">G024152</a>
<a href="#">G000011</a>
<a href="#">158795</a>
<a href="#">911305</a>
<a href="#">57360411500 (.)</a>
<a href="#">G021643</a>