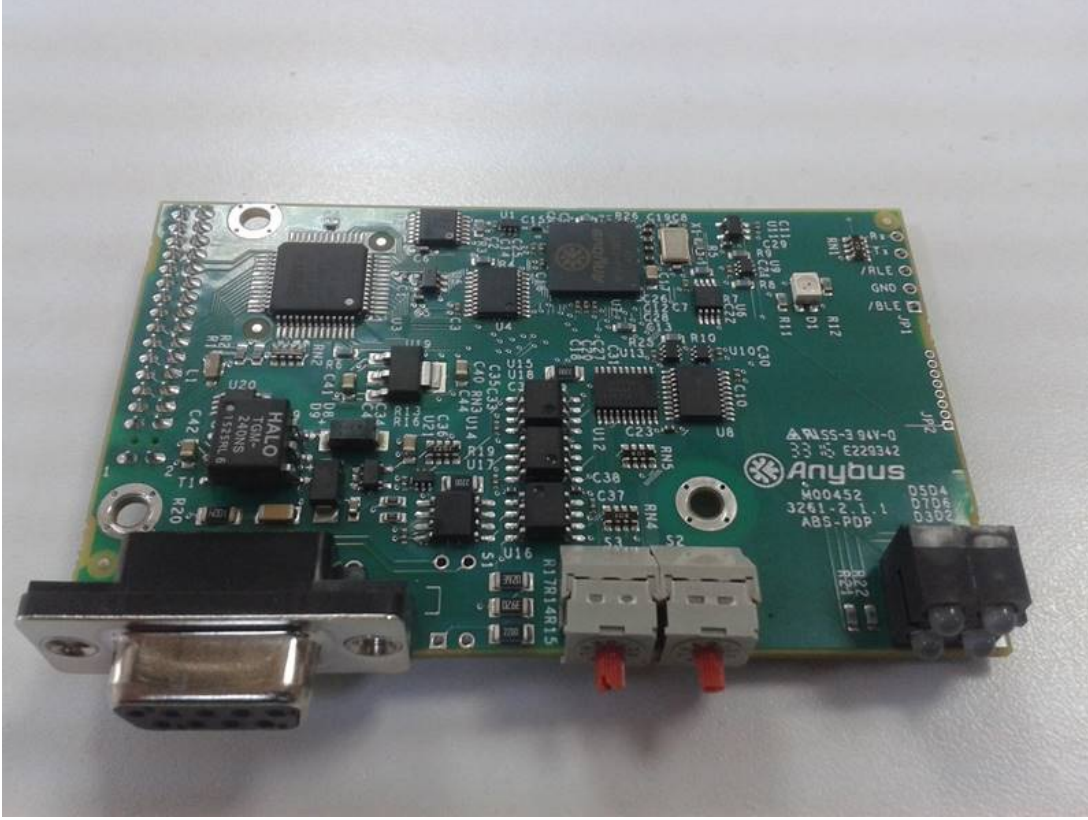


## Anybus

Garanti: 12 ay  
Bu ¼r¼ne ait T¼rkiye i¼i kapı teslim fiyat ve teslim s¼resi i¼eren teklifimizi almak i¼in [info@yursat.com.tr](mailto:info@yursat.com.tr) e-posta adresine baŐvuru yapabilir ya da ayrıntılı bilgi i¼in +90 224 240 03 04 numaralı telefonumuzdan bizlere ulaŐabilirsiniz. **Anybus** Markası, tedarik s¼resi i¼in l¼tfen bizimle iletiŐime ge¼iniz.

*Firmamız Anybus T¼rkiye Distrib¼t¼r¼ veya temsilcisi deĐildir. Firmamız sipariŐ durumunda, belirtilen ¼r¼nlerde sadece Orjinal ve yeni ¼r¼n teklifi sunmaktadır. Bu sitede g¼sterilen ¼zel marka adları ve ticari markalar ilgili sahiplerinin m¼lkiyetindedir, talep durumunda kaldırılmaktadır.*



¼r¼n	A¼ıklama
<a href="#">Ab7952,Gb Id.2460729</a>	
<a href="#">Encoder,Siemens</a>	6FX2001-5W D25-0AA1,ABSOLUTE,DRIVE CLIQ
<a href="#">M00452 3661-2.1.1</a>	
<a href="#">Anybus Wireless Bridge II</a>	AW B3000
<a href="#">Anybus Wireless Bridge II connectors set</a>	024700
<a href="#">ab7649 gateway</a>	K¼rzensten liefertermin angeben
<a href="#">AB7317</a>	Anybus Communicator CAN PROFINET IO
<a href="#">Anybus Modbus-TCP Master-Profibus Slave</a>	2273556
<a href="#">AB7650</a>	Anybus Modbus-TCP Slave/Profinet Slave
<a href="#">ABC3013</a>	ABC-SERM-PRTS
<a href="#">(slave)ethercat to profinet</a>	
<a href="#">AB7650</a>	Anybus Modbus-TCP Slave/Profinet Slave
<a href="#">ABC3000-A</a>	Anybus Communicator Serial Master - PROFIBUS Slave
<a href="#">AB7649</a>	Anybus EtherNet/IP Slave/Profinet Slave
<a href="#">INMBSRTR0320000</a>	

<a href="#">Anybus AB7900</a>	Article Number: 2390268-81
<a href="#">AB7894 CAN OPEN X-GATEWAY</a>	
<a href="#">Network Connectivity [AB7000/ANYBUS]</a>	, PROFIBUS DP, FOR K1SMP 1,2KR IMPELLER DRIVE
<a href="#">Communicator - PROFIBUS AB7000</a>	
<a href="#">Anybus Communicator - PROFIBUS AB7000</a>	EAN: 2050006434529
<a href="#">AB7558-F</a>	
<a href="#">AB9001-B</a>	Anybus X-gateway Ethernet Modbus-TCP Master-PROFIB US DP-V1 Slave
<a href="#">ABC4020-A</a>	Anybus Communicator PROFINET IO-Device - EtherCAT slave
<a href="#">ABC4023</a>	PROFINET IO device - PROFIBUS IO device
<a href="#">M00452</a>	The MCU24.2 will be installed on the CPU board.
<a href="#">AB7646</a>	Anybus X-gateway – PROFIBUS Master – PROFINET-IO Device
<a href="#">AB7670</a>	(EtherNet/IP to Profinet IO)
<a href="#">AB7653-F</a>	Anybus X-gateway PROFINET IO Slave-DeviceNet Slave
<a href="#">ABC4020-A</a>	Anybus Communicator PROFINET IO-Device - EtherCAT slave
<a href="#">ABC4023-A</a>	Anybus Communicator PROFINET IO-Device - PROFIBUS DP Device
<a href="#">M00452 Profibus</a>	
<a href="#">X-GATEWAY AB9001-B COMMUNİCATOR</a>	
<a href="#">Görev-00067041</a>	Anybus X-gateway Ethernet Modbus-TCP Master-Modbus -RTU Slave 5-Pack X-gateways with 5-pack part numbers are shipped without any accessories
<a href="#">AB9005-B</a>	Anybus X-gateway Ethernet Modbus-TCP Master-Modbus -RTU Slave
<a href="#">AB7634</a>	Anybus Profibus Slave/Modbus-TCP Gateway
<a href="#">DCS.PROFIBUS.001</a>	700-972-0CA12 PROFIBUS CONNECTOR W/ LEDS
<a href="#">ATLAS2 PLUS 101-800341</a>	
<a href="#">ATLAS2 PLUS 101-800341</a>	
<a href="#">AB7651-F</a>	X-GATEWAY
<a href="#">ABC3013-A</a>	
<a href="#">AB 7000-C</a>	
<a href="#">AB7651</a>	
<a href="#">Ab7629-C 24vcd , By Ab7629-F</a>	
<a href="#">Ab7048</a>	
<a href="#">023140-B</a>	
<a href="#">024140-B</a>	
<a href="#">Ab7318</a>	
<a href="#">025070-B</a>	
<a href="#">Ab7647-F</a>	

<a href="#">Ab7013-C</a>	
<a href="#">Ab9007-B</a>	
<a href="#">Ab7857-F Hms</a>	
<a href="#">Ab7029-C Serial: 0001274e Cb V.2.2.1 Not Available,Replaced By Ab7000-C</a>	
<a href="#">023040-B</a>	
<a href="#">Ab7007hms</a>	
<a href="#">24380</a>	
<a href="#">Rtu Slave-J1939</a>	Anybus X-gateway Modbus-RTU Slave-J1939 AB7612-B 8517620000 SE
<a href="#">Ab7000-C Serial:000230a4</a>	
<a href="#">Ab7847-F</a>	
<a href="#">Ab7013</a>	
<a href="#">M00452 Abs Pdp</a>	
<a href="#">Ab6221-C</a>	
<a href="#">Kpi1000</a>	
<a href="#">Ab7663-F</a>	
<a href="#">E229342(3261-2.1.1)</a>	
<a href="#">Ab7629-F</a>	
<a href="#">024380-B</a>	
<a href="#">Ab9005-B</a>	
<a href="#">Ab700c-Hms</a>	
<a href="#">Ab4582-B</a>	
<a href="#">Old Code Ab9007 New Code Ab9007-B</a>	
<a href="#">021450-B</a>	
<a href="#">Ab7661-F</a>	
<a href="#">Ab7007-C</a>	
<a href="#">Ab7956-F</a>	
<a href="#">Ab7612-B</a>	
<a href="#">Ab7504-F</a>	
<a href="#">Ab7312-B</a>	
<a href="#">Ab405 Customized</a>	
<a href="#">Abcc-Prt_2p Not Available</a>	
<a href="#">Ab7957-F</a>	
<a href="#">M00452</a>	
<a href="#">Ab7663</a>	
<a href="#">Ab7314-B</a>	
<a href="#">019350</a>	

<a href="#">Ab7049</a>	
<a href="#">Ab9001-B</a>	
<a href="#">X-Gateway</a>	
<a href="#">Awb3000-B</a>	Anybus Wireless Bridge II with internal antenna
<a href="#">Ab7659-F</a>	Anybus X-gateway PROFINET IO Slave-Modbus-RTU Slave
<a href="#">Ab7632-F</a>	
<a href="#">Ab7015-C</a>	
<a href="#">Ab7000-C</a>	
<a href="#">Ab7001</a>	
<a href="#">Abs-Etn 2-Port 2221-2.3.1</a>	
<a href="#">A016aaeb</a>	
<a href="#">Ab7649-F</a>	