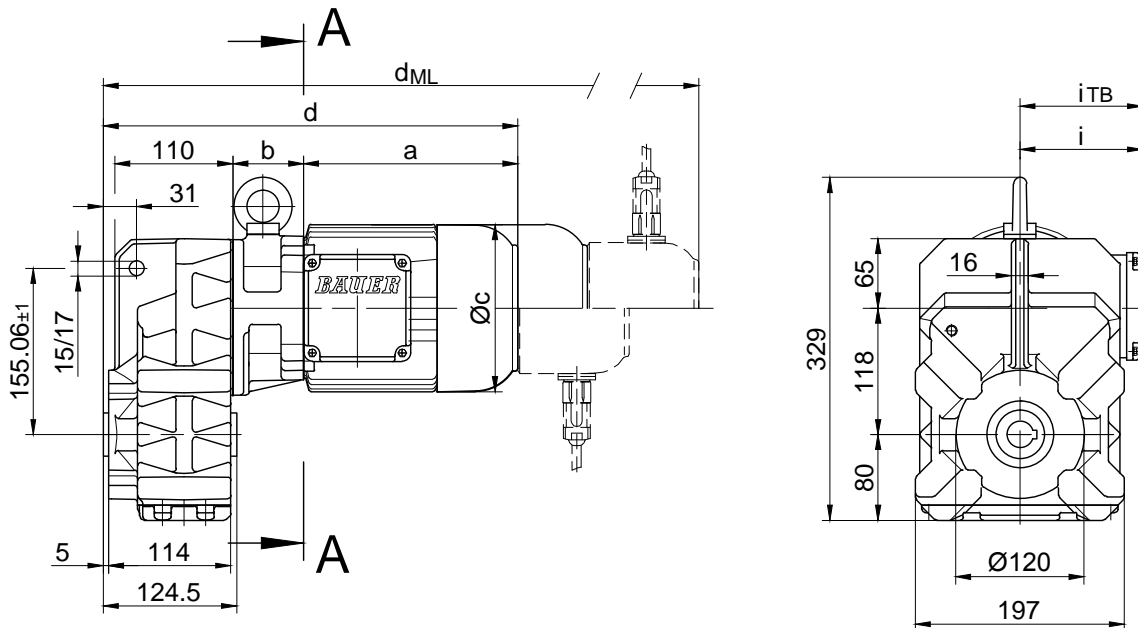
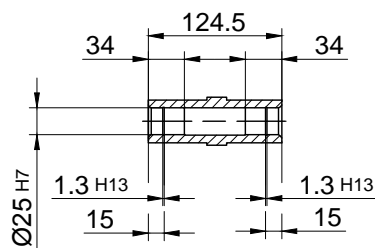


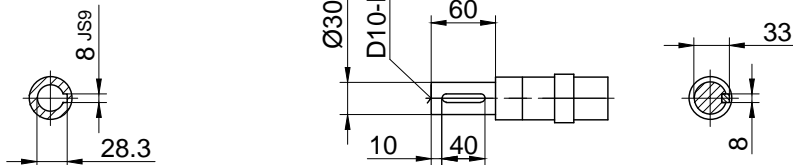
Code -0./



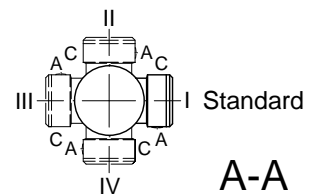
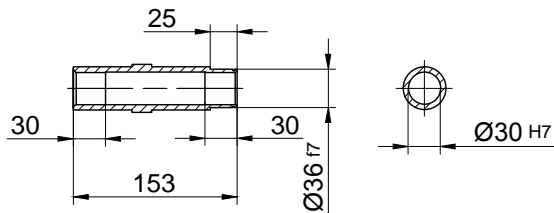
Code -4/



Code -1/



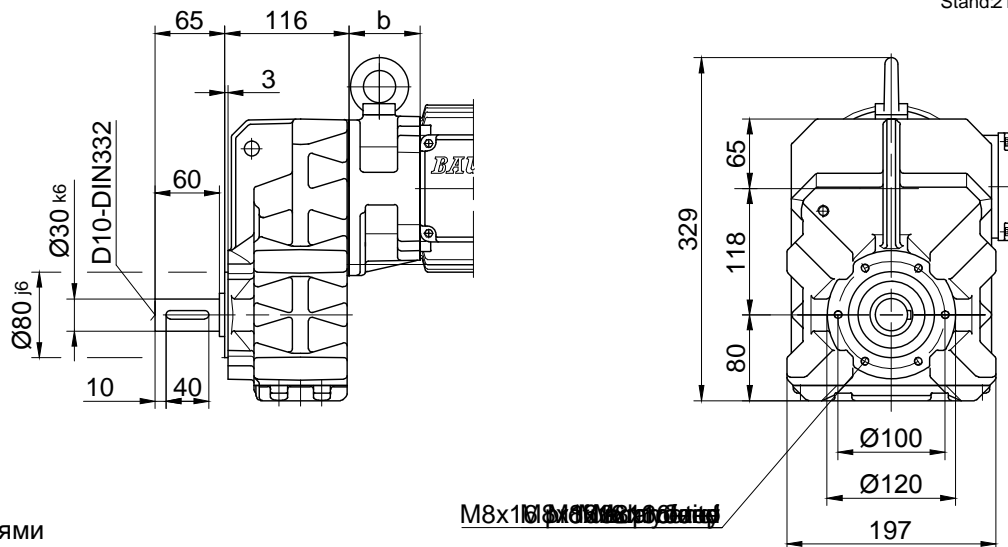
Code -5/



A-A

Тип	a	b	c	d	i	Варианты исполнений с навесными Eje de salida con dispositivos motor устройствами двигателя				
						i _{TB}	E../ES..	G	E../ES..-G	RR/RL
						d _{ML}	d _{ML}	d _{ML}	d _{ML}	
BF10Z-../D04..	143	86	111	350	90	112	393.5	412.5	455.5	-
BF10-../D05..	170	62	123	353	100	117	395	456	497.5	-
BF10Z-../D05..	170	88	123	379	100	117	421	482	523.5	-
BF10-../D06..	170	62	123	353	100	119	395	456	497.5	-
BF10Z-../D06..	170	88	123	379	100	119	421	482	523.5	-
BF10-../D07..	190	62	123	373	100	119	415	476	517.5	-
BF10Z-../D07..	190	88	123	399	100	119	441	502	543.5	-
BF10-../D..08..	200	66	156	387	115	136.5	453	494	560.5	453
BF10Z-../D..08..	200	132	156	453	115	136.5	519	560	526.5	519
BF10-../D..09..	251	80.5	181	452.5	124	158	545.5	559.5	650	545.5

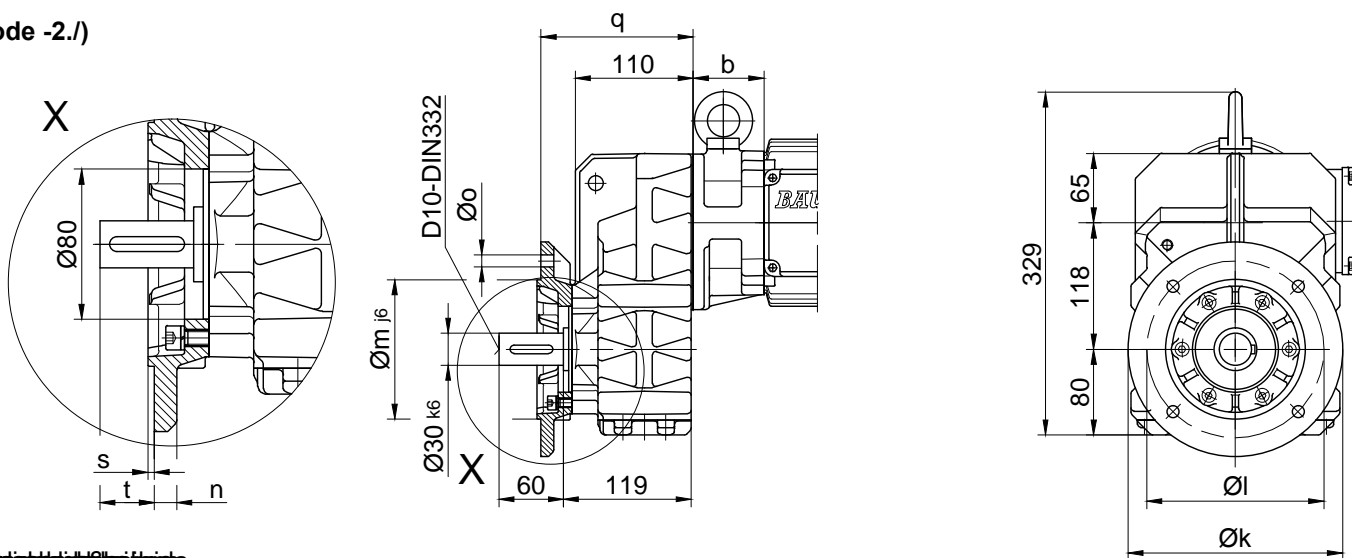
Code -7./



Стандарты с резьбами

Code -3./

(Code -2./)



Стандарты

BF10(Z)	k	l	m	n	o	q	s	t
Стандарт -3./	200	165	130	12	11	142	3.5	39
Стандарт -2./	160	130	110	10	9	135	3.5	46

Стандарты с резьбами и крепежом

Code -6.LR/

